

Since 1915

MAGNET

Featured Products

CHASSIS SAVER™ Truck & Auto Underbody CoatingPages 6-7
MAGNATILE™ Heavy Duty EPOXY Concrete Floor CoatingsPage 11

High Performance Automotive & Industrial Finishing Systems

**Commercial Fleet Vehicles • Auto Restoration • Farm Implements
Aircraft • Heavy Equipment • Fork Lifts • Liquid Waste Equipment
Refuse Containers • Mining & Oil Field Equipment • Bridges • Tanks
Structural Steel • Iron Works • Signs • Amusement Park Rides
Industrial Finishing • Marine • OEM • General Maintenance**

PAIN

www.magnetpaints.com



MAGNET PAINTS brings more than 85 years of experience to the industrial and fleet refinishing markets. We are a company with a history of creative, innovative research that develops products for our marketplace in a manner that benefits our customers, the industries we supply and our environment.

We believe that maintaining your fleet or equipment's appearance should be as simple as possible. By offering an uncomplicated and flexible range of paint products at discount prices, our customers can quickly select the items they need and move on, confident that they have obtained great protection at a great price.

No matter what kind of painting you do, commercial vehicles, custom bodies, trailers, light industrial, agricultural or off-road equipment, MAGNET has a product to suit your needs.

Simplicity in selection and convenience in application stand as hallmarks for MAGNET PAINTS. Our topcoats can be applied over competitors' primers, while our rust-inhibiting primers can accept other manufacturer's topcoats. Sure we'd like all of your business, but we need to earn it first. So please, try any of our products. If you're not 100% satisfied with our performance and value, we will refund your purchase price. No questions asked. Well, we may ask why, but with over 23,000 satisfied customers nationwide, we don't really expect that to happen.

Comments from satisfied customers...

"I am writing this letter to tell you how happy we are with your product Chassis Saver. As you know our equipment is used for snow and ice removal, and is constantly subjected to salt and liquid calcium chloride. This combination usually produces a very corrosive situation. Your product has been most effective in retarding this effect. It has reduced by 50% the amount of refinishing we have had to do on our vehicles. We would highly recommend this product to anyone facing similar situations with their fleet. Thank you for providing us with such an excellent product."

— T.V., Ohio Dept Of Transportation

"Here in the maintenance yard we repair dented and damaged cranes, especially the boom sections. I only use Magnet Paints for this work. The price is really low, yet it does such a great job."

— D.C., Newark, New Jersey

"We routinely use the 9000 Series paints to refinish heavy equipment, machinery and vehicles such as farm tractors. We consistently get excellent service from Magnet Paints, and we are more than satisfied with their product. The paint holds up well and the application is very easy. Besides, the price savings we receive by using Magnet Paints gives us a competitive advantage."

— J.M., Mt. Holly, New Jersey

"Chassis Saver is probably the best product I've ever seen when it comes to protecting car and truck frames. We do a lot of diesel truck work. With Chassis Saver, we just pressure wash the frame, spray it on, and we're done. It holds up well, it's very flexible, durable, and doesn't chip. Every customer that we do it for ends up very pleased."

— K.R., Ottsville, Pennsylvania

"I just started using Magnet's 4800 paints to refinish the dumpsters that we repair, and I haven't found any other product that comes close. Our boxes last throughout the entire winter without rusting. Magnet's paint holds up a lot better than others, so it's definitely worth it."

— S.S., Huntington, Pennsylvania

"We sandblast and repaint every kind of fleet you can imagine. We repaint everything with Magnet Paints and are very pleased with the results and the cost savings. I've got about ten different companies trying to sell me paint, but they can't beat what I'm already getting with Magnet."

— M.R., Halifax, Massachusetts

"So far, so good. I've been using it four years, and we've done three trucks with Chassis Saver. So far it has been working very, very good. It's holding up very well. It lasts a lot longer than anything else. It seems that they don't lie about what they say. You follow their instructions and you won't have any trouble."

— D.D., Manchester, New Hampshire



www.magnetpaints.com



MAGNET PAINTS

High Performance
Automotive & Industrial
Finishing Systems

Trucks, Trailers, Tractors, Machinery, Heavy Equipment, Off Road Vehicles, Commercial Fleet & Utility Vehicles, General Industrial

MAGNET 4800 Series Urethane-Alkyd Synthetic Enamel

MAGNACRYL™ 9000 Series Acrylic Enamel Fleet Finish

MAGNATRON™ 5000 Series Acrylic Urethane Fleet Finish



Colors Not Displayed: Oliver Green - 94D, Steiger Green - 100D, Safety Orange* - 59, Transport Yellow* - 15D, JI Case Brown - 44D, International Harvester White - 56D, JI Case Power White - 40D, JI Case/IH AG White - 34D, New Holland Yellow - 27D

Custom Color Matching Specialists

The chips on this page are just a sampling of the many thousands of colors possible. Perhaps your vehicles are painted a unique company color or maybe you're using a brand of equipment not listed here. Color matching is an art. A combination of computers and the human eye. With few limitations, we can usually match any color in any of the paint systems you'll find in this catalog. Give us a call or just send us a sample and we'll call you with a quote. A dried paint swatch on a piece of coated cardboard or smooth sheet metal is all we need. For the best color match, please make sure that all dry samples measure a minimum of 2 x 2 inches and are showing complete opacity. You may need to coat the sample swatch two or three times to achieve this complete coverage, especially if the paint you are submitting had previously been thinned for spray application. Please Note: Any liquid samples submitted should be un-thinned if possible or a color match could be inaccurate or take considerably longer than expected.

Send all color samples to: Magnet Color Labs • 336 Bayview Avenue • Amityville, New York 11701

Please enclose your business card including your name, company name, complete address, area code and phone number. And don't forget to indicate the quantity of gallons needed for each color submitted and the type of paint or Magnet Series you want us to match in. We'll call you with a price quote in just a few days.

www.magnetpaints.com

1-800-922-9981

info@magnetpaints.com

*Contains Lead

Color chips cannot be considered totally accurate color matches to either truck or equipment makers standards or MAGNET materials.

POPULAR COLOR SELECTIONS

Our most
Popular
Finishing
System
available in all
heavy equipment,
farm, fleet and
safety colors

HIGH PERFORMANCE • LOW VOC

4800 SERIES

SYNTHETIC URETHANE ENAMEL



Advantages:

- Easy to use • 100's of colors
- Quick drying • Rust inhibitive
- Sharp long lasting gloss
- Low odor • One coat coverage
- High build polyurethane base
- Environmentally safe
- 50% less air polluting solvents
- Apply by brush, spray or roller
- Excellent adhesion
- Flexible and impact resistant
- Optional hardener available
- Custom matched colors
- 1 gallon and 5 gallon cans
- Satisfaction guaranteed

MAGNET 4800 Series are high-solids, premium quality urethane alkyd enamels with high hiding, good leveling and excellent gloss and color retention. 4800 Series Enamels air dry to a durable finish that protects against abrasion, impact and rusting while providing resistance to mild chemicals, salt air, corrosion, temperature extremes and other factors that cause ordinary enamels to fail. 4800 Series Enamels can be catalyzed (optional) to enhance their physical properties. When modified with 1 pint per gallon

of UEH100 Urethane Enamel Hardener, the 4800 Series will dry and cure faster and harder while exhibiting higher gloss and gloss retention, increased abrasion, impact and chemical resistance. High performance over properly primed surfaces makes these enamels the perfect choice for all general purpose and light equipment finishing. Add hardener to unreduced enamel and thin accordingly for your application equipment. Catalyzed material should be used within four hours after mixing. 4800 Series is versatile enough for use on wood and concrete too.

4800 Series Technical Information

Suggested Uses Machinery, buildings, heavy equipment, dumpsters, roll offs, mining equipment, amusement park rides, tanks, rolling stock, farm implements, fork lifts, truck bodies, iron works, piping, railings, doors and gates, water treatment plants, outdoor signage, new construction and structural steel.

Colors Over 60 ready mixed factory packaged *lead-free colors. Custom factory tints available in 50 gallon lots. Tinting bases available for smaller custom color orders.

Finish Full high gloss (90+) •

Application Brush, spray or roller

Vehicle Type Urethane modified alkyd

Solvent Type Mineral spirits

VOC Maximum 3.5 LPG / 420 GPL

Flash Point 108°F (42°C) T.C.C.

Weight Solids 58% (varies by color)

Volume Solids 50% (varies by color)

Coverage Theoretical coverage at one mil dry film thickness is 834 sq. ft. per gallon, and at two mils dry, 417 sq. ft. per gal.

Rec. Dry Film 1.5 - 2.5 mils

Viscosity @ 75°F 70 - 80 KU

Dry Time @ 75°F 4800 Enamels dry to the touch in 3 - 4 hours. Recoat in 16 - 24 hours. Full cure 5 days. When catalyzed with UEH100 Urethane Enamel Hardener, dry/cure times will be reduced by approx. 30%.

Reduction Apply directly from the can for use by brush or roller. If reducing is required, ER100, SR200 or QR500 Reducer may be added up to 5% by volume without exceeding VOC of 3.5 lbs. per gallon/420 grams per liter. Use ER100, SR200 or QR500 Reducer for clean-up of painting tools and spray equipment. NOTE: When using the 4800 Series with UEH100, clean all tools and spray equipment immediately after use with QR500 Reducer or lacquer thinner.

Priming The following MAGNET primers will provide an outstanding foundation for 4800 Series Enamels: 500 Series Standard Dry, 600 Series Quick Dry, 300 Series Universal Automotive Primer, MAGNAPOXY™ 1900 Series Epoxy Primer or Rust Destroyer®

Working Pot Life Not applicable unless catalyzed with UEH100 Urethane Enamel Hardener. Once catalyzed, 4800 Series Enamels have a workable pot life of 4 hours at 70°F (21°C). Do not catalyze more than you can use in a 4 hour period.

Shelf Life Minimum 24 months in unopened containers

Packaging 1 gallon cans (4 per case), 5 gallon pails, 55 gallon drums

* Certain yellows and oranges contain lead. Lead-Free versions are available. Consult your MAGNET sales representative for more details.

NOTE: 4800 Series is not intended to be clear coated.

HIGH PERFORMANCE - LOW VOC

9000 SERIES

ACRYLIC ENAMEL FLEET FINISH



Advantages:

- High solids, high build finish
- Abrasion and impact resistant
- Extremely fast drying
- Long term durability
- Good gloss and color retention
- Sharp automotive gloss appearance
- High distinctness of image (DOI)
- Factory pack and custom colors
- Resistance to gasoline & diesel fuel
- Excellent flexibility and adhesion over properly primed surfaces
- High solids urethane catalyst
- 1 gallon and 5 gallon cans
- Satisfaction guaranteed

MAGNACRYL™ High Solids Acrylic Enamel 9000 Series, is a single-stage, fast drying, durable finishing system specifically developed for the automotive, truck, commercial fleet, OEM and industrial finishing markets. MAGNACRYL™ offers refinishers a chemical and solvent resistant paint film that resists chipping, cracking and fading. Comprised of 50% higher volume solids than conventional acrylic enamels, MAGNACRYL™ offers outstanding hiding properties and typically covers up to 30% more

than other finishes. It contains less than 3.5 lbs. per gallon VOC and is *lead-free. When mixed with 1 pint per gallon of MAGNATHANE™ 79HS High Solids Super Wet Look Catalyst, its gloss, gloss retention, durability and service life are dramatically increased and recoat sensitivity is eliminated. For overall refinishing, 9000 Series provides versatility and durability at a value not seen in today's high priced paint markets. Not for use over acrylic lacquers or uncured/catalyzed finishes.

*Our Best Value
Finishing System
available in most popular farm, fleet,
heavy equipment & safety colors*

MAGNACRYL™ Technical Information

Suggested Uses	Commercial fleet vehicles, heavy equipment, farm implements, aircraft, fork lifts, custom bodies, trailers, machinery, signs, off-road equipment, amusement park equipment, and all high quality metal finishing applications.
Colors	Over 80 ready mixed factory packaged *lead free colors. Custom factory tints available in 50 gallon lots. Tinting bases available for smaller custom color orders.
Finish	High Gloss (90+)
Application	Conventional, airless or HVLP spray, brush and roller for small areas
Vehicle Type	Acrylic hybrid polymer
Solvent Type	Methyl isobutyl ketone, xylene, aromatic hydrocarbon
VOC	Maximum 3.5 LPG / 420 GPL
Flash Point	60°F (15°C) T.C.C.
Weight Solids	66% (varies by color)
Volume Solids	52% (varies by color)
Coverage	Theoretical coverage at one mil dry film thickness is 962 sq. ft. per gallon, and at two mils dry, 481 sq. ft. per gal.
Rec. Dry Film	1.5 - 2.5 mils

Viscosity @ 75°F 50 - 60 KU

Dry Time @ 75°F With the addition of 1 pint per gallon of MAGNATHANE™ 79HS Catalyst, MAGNACRYL™ 9000 Series dries dust free in 20 minutes, tack free in 1 hour and is ready for recoat in 1 ½ - 2 hours. Without catalyst: 40 minutes dust free, 1 ½ hours tack free and 2 ½ - 3 hours recoat. Can be force dried for 30 minutes at 140°F.

Reduction In regulated areas, apply MAGNACRYL™ as supplied using HVLP or airless spray equipment - further reduction will result in greater than 3.5 lbs per gallon VOC. However, in non-regulated areas, MAGNACRYL™ can be reduced up to 25% if desired with the following MAGNET Reducers: R760 Low Temp (50 - 75°F), R740 Medium Temp (70 - 85°F), R720 High Temp Retarder (Over 85°F) |

Priming 300 Series Universal Automotive Primer, MAGNAPOXY™ 1900 Series Epoxy Primer |

Working Pot Life Not applicable unless catalyzed with one pint per gallon of MAGNATHANE™ 79HS Catalyst. Once catalyzed, 9000 Series Acrylic Enamels have a workable pot life of 4 hours at 70°F (21°C). Do not catalyze more than you can use in a 4 hour period.

Shelf Life Minimum 24 months in unopened containers |

Packaging 1 gallon cans (4 per case), 5 gallon pails, 55 gallon drums |

* Certain yellows and oranges contain lead. Lead-Free versions are available. Consult your MAGNET sales representative for more details.

HIGH PERFORMANCE - LOW VOC 5000 SERIES ACRYLIC POLYURETHANE ENAMEL

*Our most
Durable
Finishing
System
available in most forms,
heavy equipment
& fleet colors*



Advantages:

- Very tough, nonporous, abrasion and impact resistant finish
- Fast dry time • Long term durability
- Exceptional gloss and color retention
- Sharp automotive gloss appearance
- High distinctness of image (DOI)
- Apply by conventional or HVLP spray
- Factory pack and custom colors
- Excellent resistance to gasoline, diesel fuels, salt and chemicals
- Excellent flexibility and adhesion over properly primed surfaces
- High solids urethane activator
- Easy to use 4:1 mix ratio

MAGNATRON™ High Solids Acrylic Polyurethane 5000 Series is a premium quality, single-stage OEM/Refinishing System for trucks, trailers, heavy equipment and other commercial fleet and off-road vehicles. This state-of-the-art, 2.8 VOC formulation provides excellent resistance to solvents, chemicals, gasoline, fading, chipping, abrasions and scratches. Highly advanced ultraviolet screeners and light stabilizers provide unsurpassed color and gloss retention. MAGNATRON™ has a convenient mix ratio of

4:1 by volume using MAGNATRON™ 160HS Activator. Apply over properly prepared and primed metal, fiberglass and aluminum or over existing OEM finishes and cured air-dried finishes. An accelerator is available (825P) for shorter tack-free and tape times or to help when two-toning. For additional levels of long term protection and even richer depth of gloss and color, MAGNATRON™ can be clear coated with MAGNACLEAR™ OC5900 Acrylic Urethane Overall Clear Coat. Not for use over acrylic lacquers or uncured/catalyzed finishes.

MAGNATRON™ Technical Information

Suggested Uses Commercial fleet vehicles, heavy equipment, trailers, farm implements, off-road equipment, concrete trucks, fork lifts, custom bodies, aircraft, marine vessels, oil field machinery, bulk haulers, pipelines, offshore platforms, bridges, signs, exposed structural steel, chemical processing equipment, machinery, and high quality metal finishing applications.

Colors Over 80 ready mixed factory packaged *lead free colors. Custom factory tints available in 50 gallon lots. Tinting bases available for smaller custom color orders.

Finish Extreme high gloss (90+)

Application Conventional, airless or HVLP spray

Vehicle Type Acrylic polyurethane

Solvent Type Methyl amyl ketone, xylene, aromatic hydrocarbon

VOC Maximum 2.8 LPG / 335 GPL

Flash Point 60°F (15°C) T.C.C.

Weight Solids 73% (varies by color)

Volume Solids 57% (varies by color)

Coverage Theoretical coverage at one mil dry film thickness is 914 sq. ft. per gallon, and at two mils dry, 457 sq. ft. per gal.

Rec. Dry Film 1.5 - 2.5 mils

Viscosity @ 75°F 50 - 60 KU

Dry Time @ 75°F AIR DRY: 1 - 2 hours tack-free with Accelerator 825P; 6 - 8 hours tack free without Accelerator. FORCE DRY: 30 minutes at 140°F after a flash dry of 25 minutes following the final coat.
TAPE FREE TIME: Air Dry: 4 - 6 hours with Accelerator 825P; 12 - 24 hours without Accelerator. RECOATING, STRIPING, LETTERING & DECALS: Recoating can be done at any stage of dry. Striping, lettering or decals may be applied when tape-free. For films cured over 72 hours, scuff-sand before recoating, striping, lettering or applying decals.

Reduction In regulated areas, apply MAGNATRON™ as supplied using HVLP or Airless spray equipment - further reduction will result in greater than 2.8 lbs per gallon VOC. However, in non-regulated areas, MAGNATRON™ can be reduced up to 15% if desired with the following MAGNET Reducers: R760 Low Temp (50 - 75°F), R740 Medium Temp (70 - 85°F), R720 High Temp Retarder (Over 85°F)

Priming 300 Series Universal Automotive Primer, MAGNAPOXY™ 1900 Series Epoxy Primer

Working Pot Life 5000 Series Acrylic Polyurethane Enamels have a workable pot life of 3 - 5 hours at 70°F. Pot life with Accelerator 825P is 2 - 4 hours.

Shelf Life Minimum 24 months in unopened containers

Packaging 1 gallon cans filled 4/5 (4 per case), 5 gallon pails, 55 gal drums

* Certain yellows and oranges contain lead. Lead-Free versions are available. Consult your MAGNET sales representative for more details.

Hot Auto Restoration Product

6 Time WINNER of #1 Reader Service Card Responses in 2002 from 2 major industry trade magazines in both farming and trucking reaching totals of over 1.8 million qualified buyers

Paint Directly Over Rust! **CHASSIS SAVER™**

Rust Preventive Truck & Auto Underbody Coating

STOPS RUST PERMANENTLY!

No Primers or Top Coats Required!



All colors now available in 5 package sizes

Advantages:

- Single component high build urethane
- No hardeners or catalysts required
- Requires minimal surface preparation
- Apply directly over tightly adhered rust or sandblasted metal surfaces
- Penetrates rust and bonds to surface
- No primers or topcoats required
- Isolates metal from oxygen and moisture
- Will not crack, chip, flake or peel
- Unaffected by road salt, acids, gasoline, diesel fuel, corrosives or chemicals
- Field tested & proven over 10 years on heavy trucks and commercial vehicles

CHASSIS SAVER™ is a high solids, VOC compliant, single component chassis paint and underbody coating specially formulated to permanently stop automotive and truck corrosion without the use of primers or topcoats. Chassis Saver's unique "RUST STOPPING" properties permit its application directly over tightly adhered rust after only marginal surface preparation using a wire brush and/or hand scraper to remove loose scale and rust particulate. Optimum results can be achieved by sandblasting a medium blast profile to surfaces. Chassis Saver bonds to blasted and rusty metal to form a rock hard yet flexible, glaze-like, non-porous finish that won't crack, chip, flake or peel. It works by isolating metal from oxygen and moisture, and without these factors present... RUST STOPS - Dead in its tracks! Chassis Saver cures by reacting with atmospheric moisture and its cured film resembles that of a catalyzed finish yet no hardeners or activators are used. Chassis Saver is completely unaffected by road salt, gasoline, diesel fuel, oils, battery acids, hydraulic fluids, solvents, chemicals, or corrosives.

Automotive • Fleet • Industrial • Marine

Suggested Uses: Vintage truck and auto underbody (chassis, frames, floorboards, under fenders, engine compartments, trunk areas, fire walls, rocker panels, behind bumpers, etc.), commercial fleet and public works vehicles, ships, barges and commercial fishing vessels, bridges, offshore platforms, oil field equipment, refineries and pipelines, water treatment and food processing plants, oil and gas processing equipment, mining and smelting facilities, heavy equipment, liquid waste handling equipment, salt spreaders, plow trucks, off-road equipment, concrete trucks, boat trailers, antique tractors and other farm machinery, buses, military vehicles, landscaping trucks, dumpsters, roll offs, fork lifts, dump truck bodies, tanks, piping, structural steel, iron works, fence posts, chain link, steel truck rims, metal buildings and roofing and even concrete floors.

Choose from 4 Available Finishes



What's correct for your application?

UCP99 Gloss Black - As a primer or finish coat, Chassis Saver has become the industry standard for high performance protection on all underbody surfaces including frames, floor boards, engine compartments, trunk areas and under fenders. The #1 choice for fleet maintenance at hundreds of public works facilities, DOT shops, truck maintenance and fleet refinishing shops nationwide. Extensively used on snow and ice removal equipment saving thousands of dollars in costly repairs.

UCP970 Antique-Satin Black - For factory original restorations on all underbody and engine compartment surfaces. Cures to a silky smooth sheen. Use silver-aluminum as a base coat/primer.

UCP934 Silver-Aluminum - As a pre-primer under gloss or antique-satin black. Heavily filled with over two pounds per gallon of flake aluminum to help smooth and fill pits and deeper rust damage. Incredibly dense yet extremely flexible. Commonly used for marine barge and oil field maintenance. Great for metal roofs, steel truck rims and to rejuvenate tired, rusting chain link fence.

Clear - Used as a pre-primer on smoother tightly rusted surfaces. Penetrates rust and displaces oxygen to stop further rusting. Topcoat with Chassis Saver gloss or antique-satin black, aluminum or any industrial or automotive finish. Makes an unbelievable concrete sealer!

Application Note: Chassis Saver is not intended as a "cosmetic" coating for finishing applications. It has a sensitivity to UV (sunlight) and its initial appearance will change over time. Its "RUST STOPPING" properties and corrosion resistance will never degrade but its color will shift from black to charcoal gray. Silver-aluminum remains very close to it's original appearance. If aesthetics are important, Chassis Saver can and should be top coated with a quality industrial or automotive finish. Any opaque finish is effective. Clear coating is not recommended as protection. All MAGNET topcoats are suitable. Call customer service or ask your local PBE jobber for more information.

Established 1915 - We manufacture what we sell and provide the best technical support in the business. Call Monday thru Friday, 8:30 AM to 4:00 PM for assistance with your application — 1.800.922.9981 or Email: info@magnetpaints.com



CHASSIS SAVER™ has proven itself over 10 years under the harshest conditions – More than 350 townships, public works departments and local DOT fleet maintenance facilities use CHASSIS SAVER™ for protection of snow and ice removal equipment, highway, off road and general vehicle maintenance.



Here's how it's done...

This Ford 9-Inch rearend gets a new suit of armor

Use CHASSIS SAVER now and you'll never have to deal with RUST again!

Easy surface preparation and application – No special tools or equipment required – Product label contains complete information and detailed instructions.



1 Remove grease, oils and surface contaminants using a good commercial water-base degreaser. Flush all surfaces well with clean water. Allow to dry thoroughly then scrape and wire brush any loose scale or powdery rust material.



2 To your cleaned rusty surface, brush or spray CHASSIS SAVER™ in 2 or 3 thin, even coats and you're done! Silver was used here followed by two coats of gloss black. Top coat if desired with a high quality industrial or automotive finish.



3 By allowing 3 to 6 hours between coats, layers fuse together forming a single, rock hard barrier against oxygen and moisture permeation. CHASSIS SAVER resists road salts, gasoline, diesel, brake fluid, acid, solvents and chemicals.

The surface cleaning process is by far the most important step. If a heavy buildup of grease is present, you may need to scrape or wire brush prior to degreasing. Once all contaminants are removed and surfaces have dried, use a clean scraper and wire brush to remove any remaining loose rust. Be sure to allow all surfaces to dry thoroughly before beginning the painting process. The presence of moisture on the metal will ruin your finish. Remember to apply CHASSIS SAVER™ in thin, even coats. The concept of more is better DOES NOT apply here – Thin coats are a must! Note: Sandblasting is optional and is not required for CHASSIS SAVER to effectively stop rust. If blasting is to be done, be sure to leave a medium blast profile as required for optimum adhesion. Apply coatings as soon as possible after blasting.

An Explanation Of Rust & The Methods Used For Prevention

Many materials react with oxygen to form chemical compounds that are a combination of that material and oxygen. Rust is a chemical compound formed by the combination of iron and oxygen. When iron combines with oxygen, it forms iron oxide or rust. When steel starts to rust, it will of ten puff up like a reddish brown crust and even flake because iron oxide is a larger molecule than iron and the larger molecule requires more physical space than the original iron. The puffing causes cracks and voids, which exposes more bare metal to the environment. With more exposed metal, the rusting of iron will progress more rapidly and is only limited by destruction of all solid iron present. Some things cause steel or iron to rust faster than others. Water will cause iron and steel to rust. Dissimilar metals rust faster than single metals because of electrochemical reactions which is why steel rusts faster than iron, and joints between dissimilar metals rust very quickly. Salt water will cause rust faster than plain water because salt water is a better electrical conductor. Like most chemical reactions, heat also speeds rust.

Other metals oxidize, but the oxides of some other metals are no larger than the metal themselves, so they don't puff up or flake. For example, aluminum doesn't puff up when it oxidizes. This helps make aluminum oxide a good protective coating, rather than the start of rapid degeneration.

Three methods may be used to prevent the rusting of iron: (1) alloying the iron (compounding with other metals) so that it will be chemically resistant to corrosion; (2) coating it with a material that will react with the corroding substances more readily than the iron does and thus, while being consumed, protect the iron; and (3) covering it with an impermeable surface coating so that air and water cannot reach it.

The alloying method is the most satisfactory but the most expensive. A good example is stainless steel, in which chromium or chromium and nickel are alloyed with the iron; this alloy is not only absolutely rustproof but will even resist the action of such corrosive chemicals as hot, concentrated nitric acid.

The second method, protection with an active metal, is also

satisfactory, but expensive. The most common example of this method is galvanizing, in which iron is covered with zinc. In the presence of corrosive solutions, an electric potential is set up between the iron and the zinc, causing the zinc to dissolve but protecting the iron as long as any zinc remains.

The third method, protection by coating the surface with an impermeable layer, is the least expensive and therefore the most common. It is satisfactory as long as no crack appears in the coating. Once the coating cracks, however, rusting proceeds at least as fast as it would have with no protection. The most satisfactory coatings are powder coatings and baked enamels; the least expensive are paints such as red lead.

Is Rust Alive?

Many people say that rust lives and that you have to kill it to stop metal from continuing to rust. The truth is that if you cut off the supply of oxygen and moisture to rust it's like pulling the plug on a lamp and it stops. CHASSIS SAVER™ penetrates rust, encapsulates it and prevents further exposure to oxygen and water thus halting the rusting process permanently.

Our famous demo panel shows the incredible combination of flexibility and hardness in CHASSIS SAVER™. With properties similar to a baked on enamel or a powder coating, CHASSIS SAVER™ will resist cracking and chipping like no other single component or air dry coating. On the underside of a vehicle, a metal farm house roof or an off-shore oil platform, this careful balance of physical properties is crucial to stopping the passage of water and oxygen.



The final results will amaze you!



A very happy customer sent in these photos. A backyard sandblasting and a \$49 spray gun yields fantastic results.

CHASSIS SAVER™ Technical Information

Color Gloss black, antique-satin black, silver-aluminum, clear
Vehicle Type Moisture cure urethane
Solvent Type Aromatic naphtha, PM acetate
Pigment Type Varies by color: Carbon black, aluminum, zinc compounds
Viscosity 75 - 85 KU (750 to 1000 Centipoise)
VOC Maximum 2.09 LPG / 250 GPL
Flash Point 108°F (42°C) T.C.C. (Ships UPS Ground NON-Hazmat)
Weight Solids 77%
Volume Solids 71%
Application Brush or any type of conventional or HVLP spray equipment
Coverage 350 to 400 sq ft/gallon, 88 to 100 sq ft/qt, 22 sq ft/½ pint

Rec. Dry Film 4 to 6 mills (Two coats of Chassis Saver brushed or sprayed)
Dry Time @75°F Air dry to touch: 2 to 3 hours – Tack free: 3 to 5 hours – Mar free: 6 to 8 hours – Full cure: 48 to 72 hours
Recoat Time 3 hrs minimum / 24 hrs maximum. For films cured over 24 hours, scuff sanding is required using 400 grit sandpaper to dull gloss.
Reduction *Spray:* Depending on spray equipment, thin 10 to 15% using MAGNET S8 Multi-Temp Reducer — *Brush:* If brush drag is present, thin 5% with MAGNET S8 Multi-Temp Reducer
Pot Life Once opened, material will react with atmospheric moisture
Shelf Life Minimum 24 months in unopened containers
Packaging ½ Pint (8 oz), 1 quart, 1 gallon, 5 gallon, 55 gallon drum

For complete and detailed preparation and application instructions, please refer to Product Technical Bulletin WCP95-1002 available online - You'll also find a comprehensive Frequently Asked Questions section at www.magnetpaints.com

Toll Free Hotline 1.800.922.9981

THE CHOICE OF DO-IT-YOURSELFERS

PRIMERS FREE FROM LEAD & CHROMATE HAZARDS

500 & 600 Series - Heavy Duty, Lead Free Industrial Primers

These premium quality alkyd primers inhibit rust and corrosion, penetrate cracks around light rust and mill scale and have good wetting properties providing penetration and excellent bonding to hand or power tool cleaned surfaces. For use on all interior and exterior metal surfaces, including equipment, machinery, tanks, rolling stock and other tough surfaces. They are especially recommended for use over structural steel but are equally effective on ornamental iron, tinplate and weathered galvanized iron. Excellent protection in a wide range of manufacturing, industrial, municipal, agricultural and institutional applications. For use in mild to moderate atmospheric services. MAGNET Primers exhibit high hiding and good leveling properties and air dry to a durable eggshell finish. Topcoat with MAGNET 4800 Series Enamels for long term protection against abrasion, impact and rusting while providing resistance to mild chemicals, salt air, moisture, corrosion and temperature extremes.



500 Series
Standard Dry

600 Series
Quick Dry



300 Series - Universal Non-Sanding Automotive & Industrial Primer

An easy-to-use universal high solids primer-sealer formulated especially for the OEM, fleet refinish and industrial markets. Dries in just 30 minutes and exhibits excellent corrosion resistance without the use of lead or chromates. Provides excellent color holdout and uniformity. Dries to a smooth surface; no sanding is required. Contains less than 3.5 lbs. per gallon VOC and can be applied using conventional, airless or HVLP spray over properly prepared steel, aluminum or existing fully cured topcoats and OEM finishes. Since no catalyst is required, it has an unlimited pot life. Top coat with 4800, 9000 or 5000 Series Enamel systems. If sanding is required, wet sand only after 24 hours cure.

1900 Series - MAGNAPOXY™ High Solids Epoxy Primer

A two-component, 3.5 VOC, lead, chromate and isocyanate free epoxy primer formulated for maximum adhesion and corrosion resistance to properly prepared metal, fiber glass and aluminum surfaces. Features fast dry and recoat times and good color holdout properties. Can be top coated at any time without concern of lifting. Ideal for truck fleet refinishing, heavy equipment and automotive refinishers where extended service life is important in harsh and abusive environments. Convenient 1:1 mix ratio with no induction time. Fills minor scratches and surface imperfections. Can be reduced as a sealer. Mixed pot life is 24 hours.



5
YEAR
GUARANTEE



RUST DESTROYER® - Patented Rust Converting Primer

A one step system engineered to be applied directly over rusted or corroded surfaces without scraping, grinding or blasting. Converts rust to a stable, non-toxic, black iron oxide. Provides a continuous protective layer that is self-healing. Rust Destroyer® is lead free and heat resistant up to 800°F. Rust Destroyer® is lead free and heat resistant up to 800°F.

DISCONTINUED

	500 Series Standard Dry	600 Series Quick Dry	300 Series Universal	1900 Series MAGNAPOXY™	RUST Destroyer®
Uses	Light to moderate industrial	Light to moderate industrial	Automotive refinish, moderate industrial	Automotive refinish, heavy industrial	Automotive and industrial uses
Colors	Red Oxide, Light Gray, Black, White, Yellow & Green Zinc	Red Oxide, Light Gray, Black, White, Yellow & Green Zinc	Light Gray, Red Ox, Tintable White, Black	Light Gray, Tintable White	Red Oxide
Application	Brush, roll or spray	Brush, roll or spray	HVLP or conventional spray	HVLP or conventional spray	Brush, roll or spray
Topcoat with	4800 Series	4800 Series	4800, 9000 or 5000 Series	4800, 9000 or 5000 Series	4800, 9000 or 5000 Series
Vehicle Type	Modified alkyd	Modified alkyd	Phenol modified alkyd	Epoxy polyamid	Proprietary
Solvent Type	Mineral Spirits	Aliphatic naphtha, xylene	MIBK, xylene, aromatic naphtha	MIBK, xylene, aromatic naphtha	Mineral Spirits
Pigment Type	Calcium borosilicate or zinc	Calcium borosilicate or zinc	Zinc phosphate	Zinc phosphate	Proprietary
VOC	Maximum 3.5 LPG / 420 GPL	Maximum 3.5 LPG / 420 GPL	Maximum 3.5 LPG / 420 GPL	Maximum 3.5 LPG / 420 GPL	Maximum 2.34 LPG / 40 GPL
Flash Point	108°F (42°C) T.C.C.	60°F (15°C) T.C.C.	60°F (15°C) T.C.C.	60°F (15°C) T.C.C.	108°F (42°C)
% Solids by Weight	70%	72%	71%	73%	64%
% Solids by Volume	51%	51%	50%	52%	50%
Coverage	327 - 545 sq. ft. per gal	327 - 545 sq. ft. per gal	320 - 535 sq. ft. per gal	335 - 550 sq. ft. per gal	270 - 320 sq. ft. per gal
Rec. Dry Film	1.5 - 2.5 mils	1.5 - 2.5 mils	1.5 - 2.5 mils	1.5 - 2.5 mils	2.5 - 3 mils
Viscosity @ 75°F	70 - 80 KU	55 - 65 KU	45 - 55 KU	35 seconds #2 Zahn	85 - 92 KU
Dry Time					
(Tack Free / Recoat)	3 - 4 hrs / 18 - 24 hours	30 minutes / 2 hours	20 minutes / 1 hour	45 minutes / 2 hours	6 hours / 16 - 48 hours
Reduction	ER100, SR200, QR500	ER100, SR200, QR500	R740, R760, R720	R740, R760, R720	ER100, SR200, QR500
Working Pot Life	Not applicable	Not applicable	Not applicable	24 hours after mixing	Not applicable
Shelf Life	36 months	36 months	36 months	24 months	36 months

NOTE: Dry times are based on laboratory conditions @ 75°F. Coverage is based on volume solids at recommended dry film thickness with no material losses. Shelf life is based on unopened containers. Solids by weight and volume will vary with product color. ** When top coating with 9000 or 5000 Series, allow Rust Destroyer® to cure for a full 48 hours prior to top coating. All Magnet Primers are free from lead and chromate hazards.

Toll Free Hotline 1.800.922.9981

HIGH PERFORMANCE PRIMERS

100% SOLIDS MAGNATILE™ EPOXY FLOOR COATING

Apply Over Bare Concrete or
Old Coatings In Good Condition



Over 10 Times Thicker Than Ordinary Floor Paints
Won't Lift or Peel From Properly Prepared Surfaces

The Last Time You'll Ever Paint Your Concrete Floor!

Proper Coating Selection and Preparation are Key to Permanent, Lasting Floors

We've all seen the garage floor that peels after being painted with traditional store bought floor paints. No matter what was done and to no fault of anyone, car tires have pulled up the paint and bare spots of concrete or the previous coating is showing like a bad sunburn. The problem with paints that are being sold as "concrete paints" is that they soften and reactivate themselves once a hot tire is rolled onto them. This reactivation causes the paint to stick to the rubber and lift, sometimes right down to the bare concrete.

MAGNATILE™ is a chemically cured heavy duty epoxy floor resurfacing system that will stand up to hot tire traffic, gasoline, chemicals, even brake fluid and will never soften or lose adhesion to your floors. Even a 10,000-lb. forklift or an 18 wheel tractor trailer weighing over 40,000-lbs. won't damage MAGNATILE™.

You won't believe what a difference a coating like this will make on your floors. You'll have a brighter, more cheerful work space, easier sweepings and clean ups, and you'll never have to think about peeling paint again. Not to mention the smile on your face every time you turn on the lights or pull into the garage.

Bare, soiled concrete must be degreased and then acid etched prior to coating and all old firmly adhered paints should be cleaned thoroughly and lightly sanded. Loose, flaking or peeling paint must also be removed by scraping, grinding or blasting. One coat of MAGNATILE™ is all that's required and a two gallon kit will cover 200 or more square feet. The kit consists of 1 gallon of EP100 Clear Epoxy Resin "Part A" and 1 gallon of your choice of our 6 stock "Part B" colors. A variety of sealers are available for problem or porous surfaces and an optional non-slip aggregate is also available to be mixed into the material at the time of use.

If you're serious about doing it right for the last time, MAGNATILE™ is your floor coating. With just a little hard work using your own employees and a fraction of the cost charged by contractors, you can have your floors looking like photos you've seen of a high-tech industrial plant or an aircraft hanger. Call us today for a free phone consultation and cost of materials estimate. We'd love to help you get it done.

Advantages:

- Convenient 1:1 mix ratio - No induction time
- Easy to apply self leveling system
- 100% solids, solvent free formula - No VOCs
- Non-Flammable & virtually odorless
- Safe for use in confined, low ventilation areas
- Highly resistant to abrasion and impact
- Resistant to gasoline, brake fluid & chemicals
- Won't lift or peel under hot tire traffic
- Remains flexible and resilient
- Excellent adhesion to previous coatings in good condition
- Good hold-out and bridging properties over rougher, porous surfaces
- Wide range of stock & custom colors
- Simplifies floor maintenance & saves labor
- Ends dusting concrete problems
- Maximum chemical & stain resistance when used with optional clear urethane top coat

MAGNATILE™ Concrete Floor Resurfacing Systems

- Over 10 times thicker than ordinary floor paints.
- Won't lift or peel from properly prepared surfaces.
- Optional sealers available for problem or porous surfaces.
- Optional chemical resistant urethane clear coats available.



Traditional alkyd (oil base) floor paints go on thin, exhibit poor adhesion and soften easily only to be lifted by hot tire traffic.

Endless Applications: Industrial • Institutional • Commercial • Residential

Auto Repair Shops • Machine Shops • Residential Garages • Warehouses • Veterinary Clinics • Bakeries
Aircraft Hangers • Breweries • Commercial Kitchens • Chemical Storage • Clean Rooms • Control Rooms
Dairies • Food Prep Areas • Jail Cells • Institutional Kitchens • Laboratories • Locker Rooms/Shower
Loading Docks • Meat Processing Plants • Mechanical Rooms • Restaurants • Waste Treatment Plants

Do-It-Yourself in Easy Steps - Even try a sample first!

We have a detailed preparation and application bulletin and a qualified customer service technician will walk you through the entire procedure on the phone until you feel comfortable with the application instructions. We also sell a small sample kit that will allow you to test MAGNATILE™ in a place of your choice to get a feel for the material and how it applies. The kit will cover 12 to 15 square feet and includes a small roller and mixing can for all components. Cost for the kit is \$25.00 which includes UPS ground shipping anywhere in the 48 states. Sample kit price is refundable with a purchase of 3 or more 2 gallon kits. Sample kits available in light gray only.



Combine Components & Premix Add Optional Aggregate While Agitating Mix Thoroughly 3 to 5 minutes Pour Ribbons Across Floor Spread Evenly To Recommended Footage

MAGNATILE™ Technical Information

Mix Ratio (by volume) Equal Parts: 1 Part A (Resin) to 1 Part B (Converter/Pigment)
Application 1/4" to 3/8" phenolic core lint free roller and optional floor squeegee
Vehicle Type Cycloaliphatic amine cured epoxy (Solvent free 100% Solids)
Mixed Viscosity @ 70°F 90 - 95 KU (1000 - 1200 cps)
Flash Point (Seta) >200°F (Non-Flammable/Non-Hazardous)
Rec. Film Thickness 12 - 20 mils (Average roller application yields approx. 12 - 16 mils)
Coverage At 16 mils thickness, MAGNATILE™ will cover 100 sq. feet per gallon.
Coverage at 12 mils = 134 sq ft/gal, at 20 mils = 80 sq ft/gal
NOTE: The addition of non-skid aggregate will reduce coverage by approximately 10 to 20% depending on surface irregularities and substrate porosity. Be sure to calculate for materials required at adjusted coverage rates if you plan to use non-skid material.

* **Application Temp.** Minimum surface temperature: 50°F - Ambient temp: 50 - 85°F

Reduction Not recommended
Dry Time @ 70°F To touch: 6 - 8 hours, light foot traffic: 16 - 24 hours, light industrial traffic: 36 - 48 hours, automobile, truck and forklift traffic: 48 - 72 hours.
Recoat Time (if desired) 16 to 24 hours or as soon as substrate becomes walkable
Working Pot Life MAGNATILE™ has a workable pot life of 60 to 90 minutes depending upon floor and work area temperatures.
Shelf Life Minimum 24 months in unopened containers
Stock Colors Light Gray, Platinum Gray, Sand Beige, Tile Red, Teal, Smoky Blue
Packaging 2 gallon kits: 1 gal. Part A (Resin) + 1 gal. Part B (Converter/Pigment)
Non-Skid Additive Mix 2 quarts of non-skid aggregate per kit for maximum effectiveness.
Certification Formulated without lead, mercury or chromates. Does not contain any ozone-depleting substances, either Class I or Class II.

* Cure rates are not influenced by humidity. Cure times will be lengthened in colder weather and when concrete slabs are cold. * Warmer temperatures will shorten cure rates and also reduce working pot life. Preparations should be taken during very hot weather to deal with shortened pot life. Mixed material should not be left to sit in blending pails for more than a few minutes after mixing is completed. Material should be poured onto floors in ribbons and worked from floor rather than from pails.
* **WARNING:** Concrete or any flooring surfaces coated with epoxy finishes may become extremely slippery when wet. Use of non-skid aggregate additive is strongly recommended to avoid injuries.

Stock Colors "Part B"



Coming Soon!

Two Thousand New Res. Garage: Over 100 additional colors available with the addition of our "E-Z Colors" custom color packs. MAGNATILE™ kits will be supplied as a neutral base to which a color pack is added at the time of mixing. Pricing will vary depending on colors selected. Custom colors can be factory blended and pre-packaged for your convenience. Minimum batch sizes will apply. Call our customer service department or speak to your Magnet sales representative for complete details and pricing.

PERMANENT, HARD WORKING FLOORS

REDUCERS & ADDITIVES



For use with 4800 Series Synthetic Urethane Enamels, 500 and 600 Series Primers and Rust Destroyer®

ER100 Enamel Reducer for brush, spray or rolling. High quality mineral spirits. Allows multi-temperature use.

SR200 Speed Reducer for spraying and rolling. High quality naphtha for low temperature use. Helps prevent runs and sags during cold weather application.

QR500 Quick Cut Reducer for thinning without exceeding VOC limits. Multi-temperature use. Faster reduction than ER100 or SR200.

For use with 9000 and 5000 Series, Universal Primer, MAGNAPOXY™, MAGNACLEAR™ and CHASSIS SAVER™

Premium blends of urethane grade solvents designed to give optimum flow and leveling at varied temperature ranges. For best results, match reducer to your shop temperature and working conditions.

R740 Medium Temperature Reducer (70 - 85°F)

R760 Low Temperature Reducer (50 - 75°F)

R720 High Temperature Retarder (85°F and Above)

S8 Multi-Temperature Reducer for use with CHASSIS SAVER™



GWR10 Grease & Wax Remover is a unique solvent blend formulated for fast action lifting of wax, silicone, grease, road tar and oil from automotive paint surfaces for easy wipe up. It provides a light etching action for improved adhesion when refinishing. GWR10 should be used prior to sanding, to eliminate the possibility of forcing contaminants into the old paint. Easy to use with clean lint free cloths.

250S Fish Eye Eliminator prevents cratering or fish eyeing. Guards against the effects of silicone contamination. Assures a smooth finish. Use with all types of synthetics, acrylics and urethane finish coats and clear coats. Not for use in primers. Dosage: Up to 1 oz. per spray ready gallon.

825P Accelerator speeds curing, dust and tack free times. Produces faster tape times for two-toning. Helps cure times in colder temperatures. Use with MAGNATRON™ 5000 Series Polyurethane Enamels. Dosage: 4 oz per spray ready gallon. Shortens pot life.

Manufacturers of High Performance & Specialty Coatings Since 1915
MAGNET PAINTS

336 Bayview Avenue • Amityville, New York 11701 • (631) 842-7700 Fax (631) 842-8222

Order Hotline, Product Information, and Technical Assistance

1-800-922-9981

Call Toll Free 8AM - 5PM E.S.T. Monday thru Friday

Email: info@magnetpaints.com

www.magnetpaints.com

MSDS 24/7



Material Safety Data Sheets and Product Technical Bulletins can be viewed, printed and downloaded at www.magnetpaints.com/msdstechn.asp

Courteous Service: Our knowledgeable customer service representatives will assist you in product and color selection, application methods & problem solving. We are committed to providing you what you want when you need it!

Quick Delivery: 99% of all orders ship the same day or within 24 hours. Service to the Continental United States is covered in 1 - 4 days through a reliable network of common carriers and United Parcel Service.

Environmental Safety: Care for the environment is a key requirement when developing any new product. Our products are designed to meet all state and federal V.O.C. regulations. This policy guides the new development process from inception to application, and finally waste disposal.

Product Safety: Product Safety is important to us. If you have any questions, call our toll free hotline at 1-800-922-9981.

Product Warranty: MAGNET products are warranted to be of good quality and manufactured to rigid standards. Under this warranty, we will provide, at no charge, replacement for any product shown to be defective when applied in accordance with our printed instructions in applications recommended as suitable for this product.

Easy Payment Terms: We accept VISA, MasterCard, American Express, Discover, C.O.D. and Net 30-day accounts. Ask your customer service representative for more details.

Distributed By:



This page intentionally
left blank

Continue to next page
for information on



and our complete
price list





www.monstaliner.com

67 COLORS
+ BLACK

High Performance Roll-On Bed Liner



World's Toughest Do-It-Yourself Coating!

MONSTALINER® from Magnet Paints is an advanced high build do-it-yourself bed liner coating engineered for easy roller installation and requires no special skills or equipment to achieve professional results.

Developed for vehicle owners seeking a cost effective, high performance alternative to spray installed liners and expensive paint jobs, Monstaliner is 100% UV Permanent and contains no crumb rubber particles which can settle during application causing uneven appearance and a rough, hard to clean surface.

As Monstaliner is rolled, texture is pulled up from the wet coating and the surface cures with a unique raised dimple effect best described as an "enhanced orange peel". High density ceramic core filler helps Monstaliner resist abrasion and impact while creating an impenetrable barrier against moisture and corrosion.

Monstaliner carries a 5 year guarantee against fading, chalking or discoloration. Once installed, maintaining your Monstaliner is as easy as washing with a quality car wash detergent and an occasional spray wax or wash & wax soap.

Monstaliner is supplied in 1 and 2 Gallon Kits with rollers, drill mixing blade and additional tools. Coating Only with catalyst is available for spray installation. Quarts are available for small projects.

- Easy D.I.Y. Installation
- Professional Results
- 100% UV Permanent
- High Build 2 Coat System
- Easy-To-Clean Texture
- No Rough Particles
- 1 & 2 Gallon Kit Sizes

From the makers of
CHASSIS SAVER™
Truck & Auto Underbody Coating



The BIG 2 Gallon Kit includes all tools needed for surface prep and installation.

The Cost Saving Alternative to Professional Spray Installed Liners

- | | | | |
|---------------------|----------------------|--------------------|--------------------------|
| ▪ Jeep & 4x4 Tubs | ▪ Complete Exteriors | ▪ Bumpers & Grills | ▪ Teardrop Campers |
| ▪ Pickup Truck Beds | ▪ Roll Bars & Cages | ▪ Hard Tops | ▪ Golf Carts, RTVs, ATVs |
| ▪ Rocker Panels | ▪ Engine Bays | ▪ Speaker Boxes | ▪ Furniture + More |

Join **Monstaliner Masters** on Facebook - Ask questions for fast answers - Place orders @ www.monstaliner.com



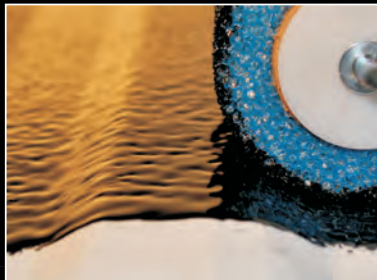
Mix • Pour • Roll!



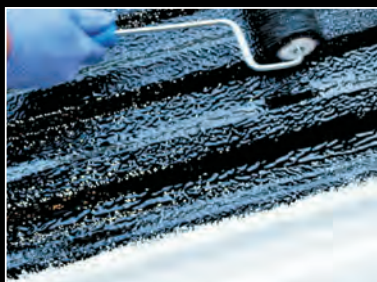
Power mix components thoroughly



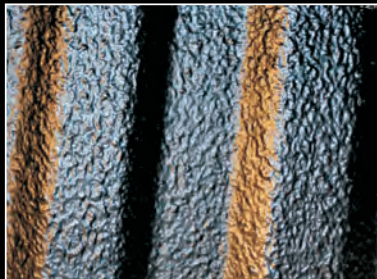
Fill the roller pan



Contains no rubber chunks



Liberal rolling creates the texture



Final uniform surface - not too rough

High Performance Protection at a Do-It-Yourself Price – NO BS!

If you've done your bed liner homework, you've learned that professionally sprayed liners like Rhino or Line-X can cost way more than you're willing or able to spend. But protecting your vehicle exterior, Jeep tub or pickup bed does not have to empty your pockets.

Monstaliner® is a highly durable, easy to install, do-it-yourself solution that provides truly professional results while costing hundreds and even thousands less than expensive paint jobs and spray liner installations.



1 Gallon Kit includes rollers and tools

Kit contents and other installation supplies needed:

- B L A C K**
- ML90RK2G - Black 2 Gallon Kit includes: 2 gals liner, 2 pints catalyst, 1 roller frame, 4 texture rollers, 1 paint brush, 2 roller pans, 50 ft masking tape, 2 scuff pads, 6 nitrile gloves, 2 mix sticks, drill mixer, install guide
 - ML90RK1G - Black 1 Gallon Kit includes: 1 gal liner, 1 pint catalyst, 1 roller frame, 2 texture rollers, 1 paint brush, 1 roller pan, 50 ft masking tape, 1 scuff pad, 6 nitrile gloves, 1 mix stick, drill mixer, install guide
 - ML90+RC1 - Black 1 Gallon Coating Only includes: 1 gallon coating, 1 pint catalyst, drill mixer, install guide
 - ML90QT - Black Quart includes: 1 Quart liner, catalyst pouch, drill mixer (order rollers separate)

T I N T A B L E

Tintable Monstaliner requires Monstashades Tints (purchased separately). Each gallon of liner requires 1 x 8 oz can of tint. Each quart requires 1 x 2 oz bottle. Refer to price sheet for more info and color choices.

- ML55RK2G - Tintable 2 Gallon Kit includes: 2 gals liner, 2 pints catalyst, 1 roller frame, 4 texture rollers, 1 paint brush, 2 roller pans, 50 ft masking tape, 2 scuff pads, 6 nitrile gloves, 2 mix sticks, drill mixer, install guide
- ML55RK1G - Tintable 1 Gallon Kit includes: 1 gal liner, 1 pint catalyst, 1 roller frame, 2 texture rollers, 1 paint brush, 1 roller pan, 50 ft masking tape, 1 scuff pad, 6 nitrile gloves, 1 mix stick, drill mixer, install guide
- ML55+RC1 - Tintable 1 Gallon Coating Only includes: 1 gallon coating, 1 pint catalyst, drill mixer, install guide
- ML55QT - Tintable Quart includes: 1 Quart liner, catalyst pouch, mixing cup, drill mixer (order rollers separate)

Additional supplies needed (not included): MEK solvent or acetone (1 gallon), dish detergent, power drill, clean rags, broom, scrap cardboard, protective eye wear, respirator mask (if working indoors)

Optional supplies (not included): Pressure washer, knee pads, wire brush, plastic drop cloths, shop vac

MONSTALINER® Technical Data

Vehicle Type	Aliphatic dual cure urethane hybrid
Colors.....	Factory pack Black & Tintable with 67 available colors (Mixed at time of use)
Packaging	1 & 2 Gallon Roll-On Kits, Coating Only Gallon kits for spray, Quarts
Volume Solids	70%
VOC	2.59 #/gal maximum (301 g/l)
Flash Point.....	110°F (43°C) (UPS Ground Ship Non-Hazardous)
Reduction	Only for spray using 4 oz per gallon of MEK, MEK Substitute or acetone
Clean-Up	MEK, MEK substitute, Acetone, Xylene or Magnet S8 Reducer
Shelf Life.....	12 months in unopened containers stored at room temp or cooler
Application Temp	Minimum surface temp 55°F - Ambient temp 50 - 90°F
Film Thickness	18 to 36 dry mils depending on number of coats used
Coverage.....	60 sq ft per gallon @ 18 mils DFT in 2 coats / 15 sq ft per quart
Full Exteriors: Most mid size vehicles require 2 gals. Oversize vehicles can require 3 to 4 gals or more. Jeep exteriors require 1 to 2 gals depending on model. Jeep tubs: 2 door = 1 gal, 4 door = 1 gal + 1 qt.	
Pickup beds: 6 ft = 1 gal, 8 ft = 1.5 to 2 gals (Call or email for help figuring material requirements on other vehicles. Measure for total square footage to calculate more accurate estimates)	
Sprayability.....	Excellent using a Shutz Undercoat gun @ 60 - 80 PSI
Mixed Pot Life.....	6 to 8 hours @ 70°F (21°C) and 50% R.H.
Dry to Touch @70°F....	2 to 4 hours depending on temperature & humidity
Recoat Time.....	Roller: 2 to 4 hours (Dep on temp, surface should be firm with slight tack)
..... Spray: Allow 45-60 minutes between coats.	
Return to Service	Light use - 48 hours after final coat, Full service 7 to 10 days
Flexibility	Excellent
Weathering	Excellent - UV permanent, will not chalk, fade or discolor
Resistance To.....	Abrasion, impact, road salt, gasoline, solvents
Service Temperature....	-22°F to 190°F (-30°C to 88°C)

For questions, comments or assistance before using, contact Magnet Paints Technical Services, Mon - Fri, 9AM to 4PM CST at 1.800.922.9981 or send an email to support@monstaliner.com



Join our Facebook Group **Monstaliner Masters** for quick answers to Frequently Asked Questions



Check out the latest customer project pics



Watch informative how-to videos

Made in Murica by:

MAGNET PAINTS .com

310 County Road 1246 • Cullman, Alabama 35057

NO BS
High Performance Coatings

www.monstaliner.com



Thanks for your interest in MONSTALINER® from Magnet Paints. Enclosed are your free color chips and a complete price list on the back of this letter. We've just released 23 new colors bringing our selection to 68 choices and there's even more coming in the future.

If you're planning to do-it-yourself, Monstaliner is the #1 choice for easy installation and long lasting, UV Permanent results. Over 12 years of development has gone into creating Monstaliner and we know you'll be proud to have it on your vehicle.

If we can help in any way with your project please feel free to contact us.

Best Regards and...



Magnet Paints | Monstaliner

support@monstaliner.com

Phone support: M-F, 9AM-4PM CST

1-800-922-9981

See reverse side for complete price list.

Place orders online at www.shop.monstaliner.com

Enclosures: ML Sheet
Price List
99 Bro
Chips

Important Advice on Choosing Colors

All colors appear different under different lighting. Unless you plan to park your vehicle in your kitchen or living room, please make your final color choices outdoors in sunlight for the most accurate idea of how colors will appear.



Now Available! - Color Matched Brushable Hinge & Door Jamb Paint

Any time you're changing the color of a vehicle you must decide what to do about the door jambs and door edges. If you're doing a full Jeep exterior, you'll need to deal with surface mount hinges. Many people don't think about the door jambs until they're already into the job. These surfaces often go undone, leaving the jambs the original color of the vehicle which looks unfinished. Since rolling liner into jambs and on hinges is somewhat of a PIA, we came up with a kick ass system to supply color matched paint in all Monstaliner colors. Now your hinges, jambs, and door edges can be brushed or sprayed in a fast dry, smooth satin finish to match your Monstaliner.... GRRRRRR!!!



New brushable/sprayable fast dry satin finish paint saves the trouble of lining door jambs and hinges!

Manufacturers of Commercial Fleet, Farm, Heavy Equipment & Industrial Finishes

Magnet Paint & Shellac Co., Inc. ~ Since 1915

310 County Road 1246 • Cullman, AL 35057 • 1.800.922.9981

www.monstaliner.com

www.magnetpaints.com

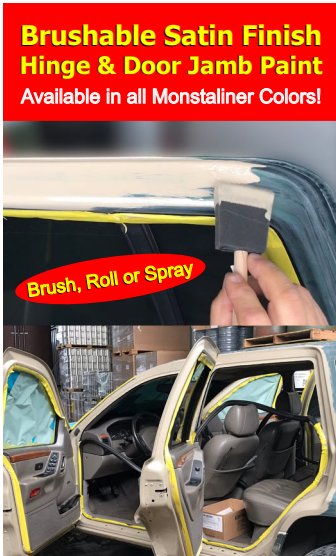


Price List

Effective October 1, 2019
(Prices will increase November 2022)

Lead Information: Certain Yellows and Oranges contain lead pigment which provides excellent coverage and opacity compared to lead free pigments which are transparent in nature requiring many more coats and significantly higher cost. Lead was outlawed only in house paints in 1978. For industrial and automotive finishing, lead is still permitted but is slowly being phased out as technology finds suitable replacements.

Lead only poses a health risk if dry powdered pigment becomes airborne and gets inhaled or if paint chips are ingested. Future repair work including dry sanding of the cured coating should be avoided where wet sanding will prevent airborne release of lead dust. Proper personal protection and good housekeeping should always be in practice when working with lead containing coatings. Gloves and a particulate respirator must be worn. **NOTE:** Lead containing items will be replaced soon with Lead Free alternates.



Black MONSTALINER® D.I.Y. Roll-On Bed Liner		
ML90RK1G	Black 1 Gallon Kit (2 rollers & handle, 2" brush, scuff pad, drill mixer, mix stick, masking tape, roller tray, 6 gloves, install guide, decals)	\$154.40
ML90RK2G	Black 2 Gallon Kit (4 rollers & handle, 2" brush, 2 scuff pads, drill mixer, 2 mix sticks, masking tape, 2 roller trays, 6 gloves, install guide, decals)	\$274.60
ML90+RC1	Black Coating Only Gallon (Includes 1 pint catalyst + drill mixer)	\$136.60
ML90QT	Black Quart + Catalyst in Foil Pouch (NO rollers or tools included with Quarts)	\$48.80
ML90REP	Black Repair Kit (includes 8oz liner + catalyst + MLR2FM mini roller / foam block kit)	\$24.70
Tintable MONSTALINER® D.I.Y. Roll-On Bedliner (Order Monstashades Colors Separate)		
ML55RK1G	Tintable 1 Gallon Kit (2 rollers & handle, 2" brush, scuff pad, drill mixer, mix stick, masking tape, roller tray, 6 gloves, install guide, decals)	\$154.40
ML55RK2G	Tintable 2 Gal Kit (4 rollers & handle, 2" brush, 2 scuff pads, drill mixer, 2 mix sticks, masking tape, 2 roller trays, 6 gloves, install guide, decals)	\$274.60
ML55+RC1	Tintable Coating Only Gallon (Includes 1 pint catalyst + drill mixer)	\$136.60
ML55QT	Tintable Quart + Catalyst in Foil Pouch (Includes small drill mixer, mixing cup - NO rollers included with Quarts)	\$48.80
Installation Rollers & Tools		
MLTR4	4" Foam Texture Roller Cover (Order as extras with any kit or Quarts)	\$3.40
MLR2FM	2" Mini Roller Kit with Foam Block (Purchase separately with any coating kit or Quarts - A must have for Jeep tubs)	\$4.40
MLRF4	4" Roller Handle (Purchase only if ordering coating kits alone or Quarts)	\$4.80
SP680108	6" x 9" Brown Extra Coarse Scuff Pad (Each)	\$2.90
RPE112	Roller Extension Pole (1 to 2 Feet) (Additional reach for pickup beds, vans, vehicle hoods and roofs)	\$16.80
MLRTK	Large Roller Installation Tool Kit** (Included with all 2 Gallon Kits ML90RK2G & ML55RK2G)	\$29.10
** 4 texture rollers, 1 roller handle, 1 x 2" paint brush, 2 scuff pads, 1 drill mix blade, 2 wooden paint sticks, 1 x 50 yd roll 1.5" masking tape, 2 roller trays, 3 pairs nitrile gloves, install guide, decals		
Spray Guns & Safety Gear		
SHUTZ1	Mid Grade Shutz Undercoat Gun with 1 Quart Metal Can (Best value - best results - easy cleaning tip)	\$39.70
WALSHUTZ	WALCOM Shutz Undercoat Gun with 1 Quart Metal Can	\$58.70
SHUTZCAN	Extra 1 Quart Metal Can with Cap	\$4.90
AREG11	Air Regulator with Gauge (NPT 1/4")	\$10.40
GLV3PK	Nitrile Gloves, X-Large, 6mil, Powder Free - Pack of 3 Pairs (6 Gloves)	\$2.90
RESP93	Dual Cartridge Respirator - Large	\$17.90

Note: Shutz Undercoat guns are **ONLY** used for spraying bedliner. Primers and Chassis Saver require a standard gravity or siphon feed gun with a 1.4 tip

MONSTASHADES™ Color Pigment Concentrates (8 oz Cans & 2 oz Bottles)					
1 Gallon Kits Require 1 x 8 oz Can — 2 Gallon Kits Require 2 x 8 oz Cans — Quarts Require 1 x 2 oz Bottle					
~ Color ~	8 oz Cans	2 oz Bottles	~ Color ~	8 oz Cans	2 oz Bottles
All Nighter	MS8-ALLN \$42.00	MS2-ALLN \$17.30	Mean Green Mother (WP)	MS8-MEAN \$43.00	MS2-MEAN \$17.70
Apocalypse (CL)	MS8-APOC \$40.50	MS2-APOC \$16.70	Medium Quartz Gray	MS8-MQG \$20.00	MS2-MQG \$8.20
Barbaric	MS8-BARB \$41.25	MS2-BARB \$17.00	Midnight Special	MS8-MIDN \$30.25	MS2-MIDN \$12.50
Blood Bath	MS8-BLOO \$38.50	MS2-BLOO \$15.80	Outbreak	MS8-OUTB \$42.00	MS2-OUTB \$17.30
Brown Eyed Girl	MS8-BROW \$28.25	MS2-BROW \$11.60	Pass The Bubbly	MS8-PASS \$22.50	MS2-PASS \$9.30
Coppa Feel	MS8-COPP \$24.75	MS2-COPP \$10.20	Predator (WP)	MS8-PRED \$52.75	MS2-PRED \$21.70
Dark Burnt Orange	MS8-DBTO \$33.75	MS2-DBTO \$13.90	Purple People Eater	MS8-PURP \$43.00	MS2-PURP \$17.70
Desert Sand	MS8-DSND \$20.00	MS2-DSND \$8.20	Pyroclastic	MS8-PYRO \$22.50	MS2-PYRO \$9.30
Detention (CL)	MS8-DETE \$39.50	MS2-DETE \$16.20	Read My Lips	MS8-READ \$45.25	MS2-READ \$18.60
Dirt Bag	MS8-DIRT \$30.25	MS2-DIRT \$12.50	Red Head	MS8-REDH \$37.50	MS2-REDH \$15.40
Don't Yell At Me! (CL)	MS8-DONT \$39.50	MS2-DONT \$16.20	Road Rash (CL)	MS8-RASH \$43.00	MS2-RASH \$17.70
Envy	MS8-ENVY \$31.75	MS2-ENVY \$13.10	Sans Panties	MS8-SANS \$20.00	MS2-SANS \$8.20
Freedom Fried	MS8-FREE \$33.75	MS2-FREE \$13.90	Smurfadelic	MS8-SMUR \$31.75	MS2-SMUR \$13.10
Get Hammered	MS8-HAMM \$28.75	MS2-HAMM \$11.80	Suicide Blonde (WP)	MS8-SUIC \$49.25	MS2-SUIC \$20.20
Heartburn	MS8-HEAR \$31.75	MS2-HEAR \$13.10	Super Genius	MS8-SUPE \$30.25	MS2-SUPE \$12.50
Hypochromic	MS8-HYPO \$29.00	MS2-HYPO \$11.90	Tarheel	MS8-TARH \$29.25	MS2-TARH \$12.00
Jeep Spice	MS8-JSPC \$20.00	MS2-JSPC \$8.20	Turquila	MS8-TURQ \$32.75	MS2-TURQ \$13.50
Johnny Popper	MS8-JOHN \$30.25	MS2-JOHN \$12.50	Urine Trouble! (CL)	MS8-URIN \$38.50	MS2-URIN \$15.80
Jungle Love	MS8-JUNG \$28.25	MS2-JUNG \$11.60	White	MS8-WHT \$22.50	MS2-WHT \$9.30
Killer Beej	MS8-KILL \$22.50	MS2-KILL \$9.30	WWII OD Green	MS8-ODG \$20.00	MS2-ODG \$8.20
Lady in Red	MS8-LADY \$44.25	MS2-LADY \$18.20	Yank My Doodle	MS8-YANK \$22.50	MS2-YANK \$9.30
Light Quartz Gray	MS8-LQG \$20.00	MS2-LQG \$8.20	Zombie Sunset	MS8-ZOMB \$33.75	MS2-ZOMB \$13.90

(WP) White primer recommended under this color (CL) Color contains lead pigment - See details in left side bar

GRRRRR!!! 23 New Colors Available Now!					
~ Color ~	8 oz Cans	2 oz Bottles	~ Color ~	8 oz Cans	2 oz Bottles
Alien Dawn	MS8-DAWN \$29.50	MS2-DAWN \$12.40	Nardont	MS8-NARD \$27.50	MS2-NARD \$11.60
Cloudy Daze	MS8-DAZE \$27.50	MS2-DAZE \$11.60	Nebluya	MS8-NEBL \$32.50	MS2-NEBL \$13.70
D.O.A.	MS8-DOA \$27.50	MS2-DOA \$11.60	Nuclear Winter	MS8-NUCL \$27.50	MS2-NUCL \$11.60
Doomsday	MS8-DOOM \$27.50	MS2-DOOM \$11.60	Rigor Mortis	MS8-RIGO \$27.50	MS2-RIGO \$11.60
Full Monte	MS8-FULL \$27.50	MS2-FULL \$11.60	Rolling Coal	MS8-COAL \$26.50	MS2-COAL \$11.20
Gangrenous	MS8-GANG \$27.50	MS2-GANG \$11.60	Run Forest Run	MS8-RUNF \$28.50	MS2-RUNF \$12.00
Gray Matter	MS8-MATT \$27.50	MS2-MATT \$11.60	Salmonella	MS8-SALM \$44.50	MS2-SALM \$18.70
GRRRRRabber	MS8-GRRR \$38.50	MS2-GRRR \$16.20	Skidmmmark	MS8-SKID \$26.50	MS2-SKID \$11.20
Jumba	MS8-JUMB \$41.50	MS2-JUMB \$17.50	Tooth Fairy	MS8-TOOT \$27.50	MS2-TOOT \$11.60
Just Stoned	MS8-JUST \$27.50	MS2-JUST \$11.60	What A Maroon	MS8-WAM \$48.50	MS2-WAM \$20.40
Lieutenant Dan	MS8-LIEU \$31.50	MS2-LIEU \$13.30	Whiskey Tango Foxtrot	MS8-WTF \$27.50	MS2-WTF \$11.60
Man On The Moon	MS8-MOTM \$27.50	MS2-MOTM \$11.60			

CHASSIS SAVER™ Rust Preventive Truck & Auto Underbody Coating				Quart	Gallon	8 ounce
UCP99	Chassis Saver™ High Build Jet Black Gloss	PAINT DIRECTLY OVER RUST		\$49.90	\$139.50	\$20.50
UCP934	Chassis Saver™ Silver-Aluminum			\$49.90	\$139.50	\$20.50
UCP98	Chassis Saver™ Floor & Machine Gray			\$49.90	\$139.50	N/A
UCP970	Chassis Saver™ Antique-Satin Black			\$49.90	\$139.50	\$20.50

MAGNET S8 Multi-Temperature Reducer (All temp reducer for thinning and clean-up of Chassis Saver™)				Quart	Pint	Gallon
S8	Magnet S8 Multi-Temperature Reducer			\$15.75	\$11.25	\$41.75
MAGNAPOXY™ 2K Epoxy Primer (For use on bare steel and aluminum or over old properly scuffed OEM paint)				2 Pint Kit	2 Quart Kit	2 Gal Kit
EP1925	MAGNAPOXY™ 2K Automotive Epoxy Primer - Light Gray			\$52.90	\$81.40	\$225.30
MAGNET Universal 1K Lift Resistant Primer (For use on bare steel or over old properly scuffed OEM paint)				Quart	Gallon	
UP325	Universal Automotive 1K Non-Sanding Primer - Light Gray			\$25.40	\$62.40	
UP324	Universal Automotive 1K Non-Sanding Primer - White			\$25.40	\$62.40	

NOW AVAILABLE! Color Matched Hinge & Door Jamb Paints (ALL Monstaliners Colors)

A few years ago while doing one of our own Jeep projects we decided to experiment and tint some automotive paint to match the liner for the door jambs and surface mount hinges. Well...it worked out much better than expected so we decided to make it a regular item. **Monstaliners Hinge and Door Jamb Paint** is a satin finish automotive acrylic enamel that can be **brushed, rolled or sprayed**. Available in **1 Quart Kits** that include foam paint brushes, mini roller set and a small roller pan.

1 Quart Kits with tools

\$59 All Colors

Complete 1 Quart Kits

Place orders online @ www.shop.monstaliners.com

MAGNET PAINTS



Wholesale Price List #WPL-0522

Effective May 1st 2022

All Prices Subject to Change Without Notice

Freight Prepaid on Orders 180 Gallons or More

**Commercial Fleet Refinish • OEM • Heavy Equipment
Farm Implements • Auto Restoration • Industrial Finishing
Steel Fabrication • General Maintenance**



**Magnet Paint & Shellac Co., Inc. • 310 County Rd 1246 • Cullman, Alabama 35057
1.800.922.9981 • 631.842.7700 • Fax: 631.842.8222 • Email: info@magnetpaints.com**

www.magnetpaints.com

Revised 5-01-22

High Performance Automotive & Industrial Finishing Systems

Commercial Fleet Vehicles • Auto Restoration • Farm Implements • Aircraft • Signs
Heavy Equipment • Fork Lifts • Liquid Waste Equipment • Refuse Containers
Mining & Oil Field Equipment • Bridges • Tanks • Structural Steel • Iron Works
Amusement Park Rides • Industrial Finishing • Marine • OEM • Maintenance

4800 Series MAGNET™

Synthetic Urethane Enamel

Uses UEH100 1 Pint
Hardener Optional

(1 and 5 Gallon Prices)

9000 Series MAGNACRYL™

Acrylic Enamel Fleet Finish

Uses 79HS 1 Pint
Catalyst Recommended

(1 Gallon Prices)

5000 Series MAGNATRON™

Acrylic Aliphatic Polyurethane

Uses 160HS 1 Quart
Activator Required

(4/5 Gallon Prices)

GREENS

	Item No.	1 Full Gal	5 Gallon	Item No.	1 Full Gal	Item No.	4/5 Gallon
Dark Green.....	4800	42.75	211.25	9000	92.00	5000	123.00
Seattle Green.....	4803	45.50	**	9003	92.00	5003	123.00
John Deere Green.....	4809	51.50	**	9009	92.00	5009	123.00
Terex/Clark Green.....	4812	54.50	**	9012	92.00	5012	123.00
Mack Green.....	4815	47.50	235.00	9015	92.00	5015	123.00
Sullair Green.....	4818	56.25	**	9018	92.00	5018	123.00
Oliver Green.....	94-4800	70.25	**	94-9000	100.25	94-5000	129.00
Steiger Green.....	100-4800	81.00	**	100-9000	159.25	100-5000	212.75
Safety Green.....	92-4800	66.75	**	92-9000	100.25	92-5000	129.00

BLUES

Mack Blue.....	4825	42.75	211.25	9025	92.00	5025	123.00
Iron Blue.....	4826	42.75	**	9026	92.00	5026	123.00
Medium Blue.....	4827	51.50	255.00	9027	92.00	5027	123.00
Royal Blue.....	4828	42.75	**	9028	92.00	5028	123.00
BFI Blue.....	4833	42.75	**	9033	92.00	5033	123.00
Ford Blue.....	4834	55.00	**	9034	92.00	5034	123.00
Safety Blue.....	4835	56.25	**	9035	92.00	5035	123.00
Komatsu Blue.....	4840	49.75	**	9040	92.00	5040	123.00
Dresser Blue.....	4843	55.25	**	9043	92.00	5043	123.00

YELLOW & ORANGES

Safety Orange CL	4859	87.50	**	9059	109.75	5059	137.50
John Deere Industrial Yellow CL	4860	75.50	375.00	9060	109.75	5060	137.50
Orange CL	4861	74.50	**	9061	109.75	5061	137.50
New Caterpillar Yellow LF	4862	47.50	235.00	9062	92.00	5062	123.00
John Deere Agricultural / Safety Yellow LF	4863	64.50	**	9063	166.25	5063	221.75
School Bus Yellow CL	4866	75.50	375.00	9066	109.75	5066	137.50
Allis Chalmers Orange CL	4867	83.50	**	9067	109.75	5067	137.50
Omaha Orange CL	4868	76.50	**	9068	109.75	5068	137.50
Hitachi Orange CL	4869	83.50	**	9069	109.75	5069	137.50
Komatsu Yellow CL	4870	64.50	**	9070	109.75	5070	137.50
Old Caterpillar Yellow CL	4871	64.50	**	9071	109.75	5071	137.50
Komatsu Dark Yellow CL	4872	64.50	**	9072	109.75	5072	137.50
Grove Yellow CL	4874	64.50	**	9074	109.75	5074	137.50
Minneapolis-Moline Prairie Gold CL	4855	84.50	**	9055	109.75	5055	137.50
Dresser Yellow CL	4858	63.50	**	9058	109.75	5058	137.50
JI Case Power Yellow CL	14-4800	81.50	**	14-9000	109.75	14-5000	137.50
Transport Yellow CL	15-4800	88.50	**	15-9000	178.25	15-5000	228.25
International Harvester / Federal Yellow CL	17-4800	74.50	**	17-9000	109.75	17-5000	137.50
New Holland Yellow LF	27-4800	68.50	**	27-9000	152.50	27-5000	207.25

BROWNS, BEIGE & TAN

Chocolate Brown.....	4845	42.75	211.25	9045	93.00	5045	123.00
Dark Brown (UPS).....	4846	42.75	**	9046	93.00	5046	123.00
Midnight Brown.....	4847	42.75	**	9047	93.00	5047	123.00
Beige.....	4849	45.75	**	9049	93.00	5049	123.00
Ingersoll Rand Beige.....	4850	55.00	**	9050	93.00	5050	123.00
JI Case Power Tan.....	4857	53.75	**	9057	101.75	5057	129.00
JI Case Brown.....	44-4800	56.25	**	44-9000	93.00	44-5000	123.00
	4848	42.75	**	9048	93.00	5048	123.00

REDS, BURGUNDY & PURPLE

Timberjack Red CL	4873	81.50	**	9073	109.75	5073	137.50
Bright Red.....	4875	51.00	252.50	9075	143.00	5075	191.00
Waste Management Burgundy.....	4876	51.00	**	9076	112.75	5076	144.50
Massey Ferguson Red / Safety Red.....	4877	67.50	**	9077	145.00	5077	194.00
International Harvester Red.....	4878	68.50	340.00	9078	152.75	5078	205.00
Mack Red.....	4879	68.75	341.25	9079	152.75	5079	205.00
New Holland Red.....	04-4800	80.25	**	04-9000	168.50	04-5000	221.75
Safety Purple.....	4881	61.75	**	9081	101.75	5081	129.00

WHITES, BLACK, GRAYS, SILVER-ALUMINUM

Super White.....	4889	58.50	290.00	9089	94.75	5089	123.00
Jet Black High Gloss.....	4890	42.75	211.25	9090	94.25	5090	121.75
Semi-Gloss Jet Black.....	4891	42.75	211.25				
Battleship Gray.....	4893	44.50	220.00	9093	94.75	5093	123.00
Light Gray.....	4894	44.50	220.00	9094	94.75	5094	123.00
Fleet White.....	W10-4800	63.50	**	W10-9000	94.75	W10-5000	129.00
Ford Wimbeldon White.....	W20-4800	63.50	**	W20-9000	94.75	W20-5000	129.00
Mack White.....	W30-4800	63.50	**	W30-9000	94.75	W30-5000	129.00
Ford 9D White.....	W40-4800	63.50	**	W40-9000	94.75	W40-5000	129.00
Code 11 Antique White.....	W50-4800	63.50	**	W50-9000	94.75	W50-5000	129.00
508 White.....	W60-4800	63.50	**	W60-9000	94.75	W60-5000	129.00
Ford Oxford White.....	W70-4800	63.50	**	W70-9000	94.75	W70-5000	129.00
Dovetone Gray.....	G10-4800	63.50	**	G10-9000	94.75	G10-5000	129.00
Ford Light Gray.....	53-4800	63.50	**	53-9000	103.25	53-5000	129.00
Ford Dark Gray.....	52-4800	63.50	**	52-9000	103.25	52-5000	129.00
Non-Smudge Silver-Aluminum.....	4899	55.00	272.50	9099	94.25		

SYMBOLS: **LF** = Lead FREE
CL = Contains Lead
*** 5 Gallon Size available by special order - Call for minimums
N/A = Not Available At This Time
☎ = Call for Availability

NOTE: Where no **LF** or **CL** symbol is present, Item is a Lead Free color. For more info on permissible use of lead in automotive and industrial coatings, contact your Magnet sales representative or our customer service department.



Indicates Flammable items below 100°F Flash Point - Additional shipping charges will apply. See back page for complete information.

High Performance Finishes For Commercial Fleet, Farm, Heavy Equipment & Industrial Maintenance



HIGH PERFORMANCE PRIMERS - Rust Inhibitive - Free From Lead & Chromate Hazards

1 Gal 5 Gal

500 Series & 600 Series Primers are used under 4800 Series Enamels Only.

520	Standard Red Iron Oxide - High Performance Rust Inhibitive Primer	35.50	175.00
525	Standard Light Gray - High Performance Rust Inhibitive Primer	36.25	178.75
550	Standard Black - High Performance Rust Inhibitive Primer	35.50	175.00
530	Standard Green Zinc - High Performance NO RUST Primer	50.75	251.25
570	Standard Yellow Zinc - High Performance NO RUST Primer	50.75	251.25
681	QD Red Iron Oxide - Rust Inhibitive Industrial Primer (30 Minute Dry)	41.50	205.00
682	QD Light Gray - Rust Inhibitive Industrial Primer (30 Minute Dry)	42.25	208.75
631	QD Green Zinc - NO RUST Industrial Primer (30 Minute Dry)	54.25	268.75
670	QD Yellow Zinc - NO RUST Industrial Primer (30 Minute Dry)	54.25	268.75

**- Also Available -
Red & Gray
Shop Primers**
\$15.00 per Gallon and up
100 Gallon Minimum Purchase
5 Gal Cans Only - Call for details

Universal Primer and MAGNAPOXY 2K Epoxy Primer are used under 9000 Acrylic Enamels and 5000 Acrylic Polyurethane Enamels.

Can also be used under 4800 Series for more demanding applications. MAGNAPOXY offers best adhesion and corrosion resistance.

UP325	Universal Light Gray Auto Non-Sanding Primer (Non-Lifting - 30 Min Dry - 1.5 Hrs Recoat)	25.40 Qt	62.40	309.50
UP324	Universal White (Tintable) Automotive Non-Sanding Primer	25.40 Qt	62.40	309.50
UP320	Universal Red Iron Oxide Automotive Non-Sanding Primer	62.40	309.50	309.50
UP350	Universal Black Automotive Non-Sanding Primer	48.80	241.50	241.50
EP1925	MAGNAPOXY 2K Auto Epoxy Primer - Light Gray (1:1 mix ratio)	2 Pint Kit 52.90	2 Quart Kit 81.40	2 Gal Kit 225.30

CHASSIS SAVER™ Rust Preventive Underbody Coating - Stops Rust Permanently!

1/2 Pint (8 oz) Quart 1 Gal

UCP99	CHASSIS SAVER™ Gloss Black Rust Preventive Paint (Thin 10-15% for spray with S8 Reducer)	20.50	49.90	139.50
UCP934	CHASSIS SAVER™ Silver-Aluminum Rust Preventive Paint	20.50	49.90	139.50
UCP970	CHASSIS SAVER™ Antique-Satin Black Rust Preventive Paint	20.50	49.90	139.50
UCP98	CHASSIS SAVER™ Floor & Machine Gray	20.50	49.90	139.50
UCPNSFA1	Non-Skid Concrete Floor Coating Additive (Use 1 pound per gallon)	19.75	Per 1 lb Can	

HARDENER, CATALYST, ACTIVATOR & ADDITIVES

Pint Quart 1 Gallon

UEH100	Urethane Enamel Hardener (For optional use with 4800 Series - 1 Pint per Gallon)	26.00 Pint	N/A	(Save 10%) 187.20 Gallon
79HS	MAGNATHANE™ High Solids Wet Look Urethane Catalyst (Use with 9000 Series - 1 Pint per Gal)	35.75 Pint	N/A	(Save 10%) 257.40 Gallon
160HS	MAGNATRON™ High Solids Activator (Use with 5000 Series - 1 Quart per Gallon)	N/A	55.75 Quart	N/A
250S	Fish Eye Eliminator (9000 & 5000 Series) Usage: Up to 1 oz. per spray ready gallon	23.50 Pint	N/A	N/A
825P	MAGNATRON™ 5000 Series Accelerator Usage: 4 oz. per spray ready gallon	55.25 Pint	N/A	N/A

MAGNATILE™ 100% Solids Industrial Epoxy Floor Coating - Non-Flammable, Solvent Free, Won't Lift or Peel From Properly Prepared Surfaces

EP100	MAGNATILE™ 100% Solids Epoxy Concrete Floor Coating Kit - Zero VOC (1 Gallon Part A - Resin + 1 Gallon Part B - Converter/Pigment)	241.50 per 2 Gal Kit
Each 2 Gallon Kit covers 200 - 250 square feet - Stock Colors: #101 Light Gray, #104 Platinum Gray, #103 Sand Beige, #102 Tile Red, #105 Teal, #106 Smoky Blue - Custom colors available		
EP950-125GK	MAGNATILE™ Clear Water Base Epoxy Concrete Sealer (1 Gal Part A - Resin + 1 Qt Part B - Hardener) Each 1 1/4 Gal Kit covers 375 - 450 sq ft	159.75 per 1 1/4 Gal Kit
EPDVC-BW35	MAGNATILE™ Decorative Colored Vinyl Chips - 50:50 Black/White (Covers up to 450 sq ft/unit)	79.50 per 3 1/2 lb Unit
EP100SK	MAGNATILE™ Sample Kit - Contents: 8oz each Part A & Part B, 4" roller handle + epoxy roller refill, mix can for both components, mix stick, Prep & Application Bulletin EP100AB-1	\$65.00 (Includes UPS in 48 States)

REDUCERS

Quart 1 Gal 5 Gal

For use ONLY with 4800 Series Enamels, 500 or 600 Series Primers. NOT for use with Universal Primer, 9000 or 5000 Series Automotive Finishes

ER100	Enamel Reducer	19.75	96.25
SR200	Speed Reducer	24.75	121.25
QR500	Quick Cut Reducer	26.25	128.75

For use With 9000 Series Acrylic Enamels, 5000 Series Acrylic Polyurethane Enamels, Universal and MAGNAPOXY™ Primer

R740	Medium Temperature Reducer (70° - 85°F)	32.25	158.75
R760	Low Temperature Reducer (50° - 70°F)	35.50	175.00
R720	Retarder - High Temp. (85°F and Above) Blend together 1:1 with R740	Quart 15.50	42.50

For thinning CHASSIS SAVER™ Rust Preventive Paint

S8	Multi-Temperature Reducer	Pint 11.25	Quart 15.75	41.75	206.25
----	---------------------------	------------	-------------	-------	--------

For Spray Gun Clean Up ONLY - NOT for thinning or tacking between coats

S7	Lacquer Thinner	23.00	112.50
----	-----------------	-------	--------

Grease & Wax Remover

GWR10	Grease & Wax Remover	27.75	136.25
-------	----------------------	-------	--------

BLACK MONSTALINER® D.I.Y. Roll-On Bed Liner Kits

1 Gallon Kit 2 Gallon Kit 1 Gal Coating Only (No Rollers) Quarts (No Rollers)

ML90	MONSTALINER® Black	(ML90RK1G) 154.40	(ML90RK2G) 274.60	(ML90+RC1) 136.60	(ML90QT) 48.80
------	--------------------	-------------------	-------------------	-------------------	----------------

TINTABLE MONSTALINER® D.I.Y. Roll-On Bed Liner Kits (Requires Monstashades Color Concentrate Sold Separately)

ML55	MONSTALINER® Tintable	(ML55RK1G) 154.40	(ML55RK2G) 274.60	(ML55+RC1) 136.60	(ML55QT) 48.80
------	-----------------------	-------------------	-------------------	-------------------	----------------

MONSTASHADES™ Color Concentrates

8 Ounce (Gal) 2 Ounce (Quart) 8 Ounce (Gal) 2 Ounce (Quart)

MS-WHT	White	22.50	9.30	MS-DBTO	Dark Burnt Orange	33.75	13.90
MS-LQG	Light Quartz Gray	20.00	8.20	MS-JSPC	Jeep Spice	20.00	8.20
MS-MQG	Medium Quartz Gray	20.00	8.20	MS-PYRO	Pyroclastic	22.50	9.30
MS-ODG	WW2 OD Green	20.00	8.20	MS-READ	Read My Lips	45.25	18.60
MS-DSND	Desert Sand	20.00	8.20	MS-LADY	Lady In Red	44.25	18.20

** 58 Additional Colors Available - See Supplementary Monstaliner Price Sheet Included or visit www.monstaliner.com **

MONSTALINER® Roller Installation Tools & Shutz Spray Guns

MLTR4	4" Blue Texture Roller Cover	3.40	WALSHUTZ	Walcom Shutz Gun w/1 Qt Bottle	58.70
MLR2FM	2" Mini Roller Kit w/Foam Block (For Jeep Tubs & tight spots)	4.40	ECSHUTZ	Economy Shutz Gun w/1 Qt Bottle	19.30
MLRF4	4" Heavy Roller Frame	4.80	SHUTZCAN	Extra 1 Quart Shutz Bottle	4.90
MLRTK	Lg Roller Install Tool Kit (incl w/2 Gallon Kits #ML90/55RK2G)	29.10	RESP93	Dual Cartridge Respirator - Large	17.90



Paint Directly Over Rust!

CHASSIS SAVER™

Rust Preventive Paint

Truck & Auto Underbody Coating

- Single Component - No Hardeners Required
- Minimal Surface Prep Using Only a Wire Brush
- Apply Directly Over Tight Rust or Sandblasted Metal
- Bonds To Prepared Surfaces - NO Primers Needed
- Isolates Metal From Oxygen and Moisture
- Will Not Crack, Chip, Flake or Peel
- Unaffected by Road Salt, Gasoline, Diesel Fuel, Battery Acid, Hydraulic Fluid, Solvents, Chemicals or Corrosives
- Field Tested & Proven Over 10 Years in Heavy Truck and Commercial Fleet Refinish Markets

Available in: Gloss Black, Antique Satin Black, Silver-Aluminum and Floor/Machine Gray

\$49.90 per quart

\$139.50 per gallon

\$8 Spray Reducer \$15.75 per quart

Plus Shipping and Handling - NO Hazmat Charges

**Compare to
POR-15 and
Save 45%**

As Seen In: Street Rodder, Mopar Muscle
Classic Trucks, Mustang Monthly, Truckin,
Dune Buggies & Hot VW's, Cars & Parts,
MG Magazine and Popular Hot Rodding

**STOPS
RUST
PERMANENTLY!**



Call to order 1-800-922-9981



Distributor Opportunities Available!

www.magnetpaints.com

Terms & Conditions

SAVE BIG ON FREIGHT! As a result of the tremendous volume of freight that leaves our warehouse daily, we are able to negotiate better freight rates and larger discounts with major carriers on nationwide shipping. If you normally purchase 20 to 24 gallons per order, you can dramatically reduce your freight costs by 50 to 70% by doubling or tripling your order size without paying any additional freight charges. Contact customer service for complete details and freight quotes.

PRICING: All prices effective 5-1-22. Latest price list revision 5-01-22. All prices are indicated as 1 or 5 gallon. Pint and Quart pricing are indicated where available.

SALES TAX: We are required to collect sales tax in the state of Alabama only. All other states are billed as Out of State - Non Taxable. (Resale and exempt certificates are accepted. A complete signed and dated form including your valid tax ID number is required prior to your shipment leaving our dock.)

NO MINIMUMS: We have NO minimum purchase and do not require that you purchase full cartons. Keep in mind: The more you purchase, the lower your freight costs will be.

PACKAGING: 1 Gallon friction lid Cans - 4 Per Case. 5-Gallon Steel Pails, 55-Gallon Drums on request - Call for pricing.

FREIGHT POLICY: Orders of 180 gallons or more ship *Freight Prepaid. Orders of less than 180 gallons shipped F.O.B. Cullman, AL 35057 NOTE: Certain shipping points that receive indirect service by major freight carriers (interline points) will incur a partial shipping charge even when the prepaid minimum has been met. Please check with your MAGNET sales representative or our customer service department for complete details.

NOTE: Flammable items (indicated by 🔥 throughout this price list), when shipped via U.P.S. only will include a \$20.00 hazardous materials shipping charge per carton, 4-gallon case or per 5 gallon pail that contains flammables. This is a U.P.S. charge and only applies to flammables. Certain higher priced items will be packed for U.P.S. shipment in foam packing for added safety.

UPS CHARGES: On orders less than 20 gallons, U.P.S. ground shipping rates run between \$5.00 and \$11.00 per gallon based on U.P.S. Zone destination. Rates will be higher when flammable items are present. Whenever possible, orders of 20 gallons or more will ship via common carrier thus avoiding hazardous charges and reducing per gallon shipping rates. Call for more details and pricing. We do not ship paint by air or expedited service.

MISCELLANEOUS CHARGES: Miscellaneous charges on invoices are for hazardous materials shipping charges when applicable.

C.O.D. SHIPMENTS: We no longer do C.O.D. Shipments. All orders must be prepaid in full prior to shipping.

COMMON CARRIER CHARGES: There are NO hazardous shipping charges on common carrier orders.

PAYMENT TERMS: We accept Visa, Master Card, Discover and American Express. All orders must be prepaid prior to shipping. Terms otherwise are Net 30 Days only if credit has previously been established. If you would like to open an account, please ask our sales department to email you a credit application. We reserve the right to deny credit.

All first time orders for new customers requesting credit must be prepaid prior to shipping, NO Exceptions.

★★★ We accept Visa, Master Card, Discover and American Express ★★★

~ Since 1915 ~

Magnet Paint & Shellac Co., Inc. • 310 County Rd 1246 • Cullman, Alabama 35057

1.800.922.9981 • 631.842.7700 • Fax: 631.842.8222 • Email: info@magnetpaints.com